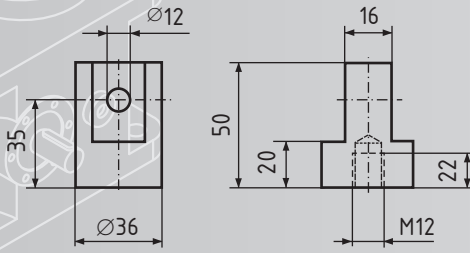
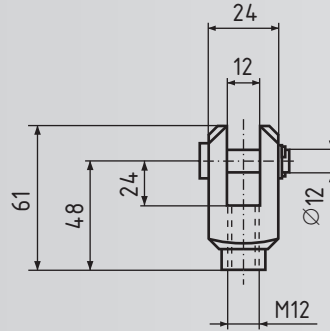


# Spindelhubgetriebe GS I S21

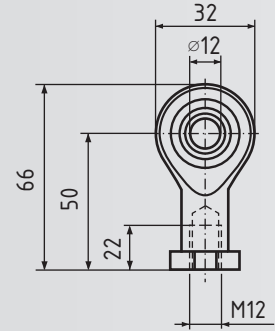
**5 kN**  
S21



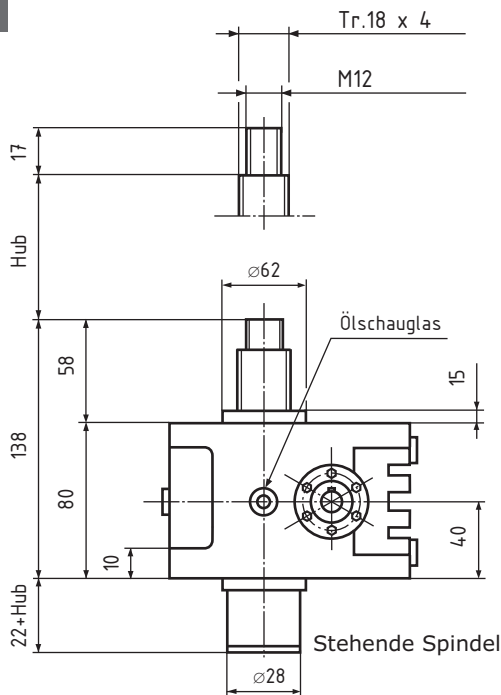
Gelenkkopf GSA I Z



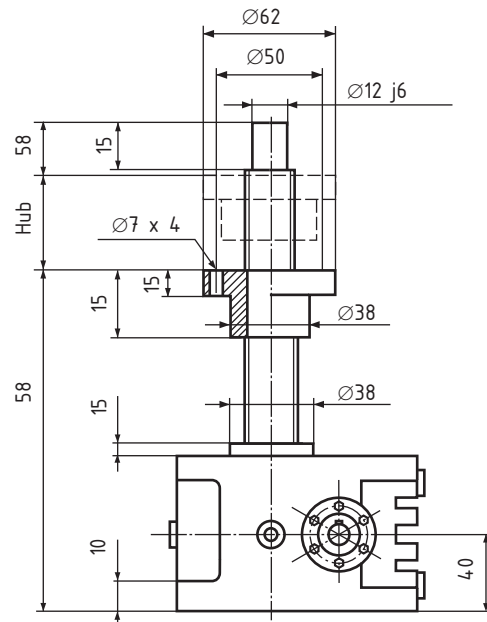
Gabelkopf GSA I G



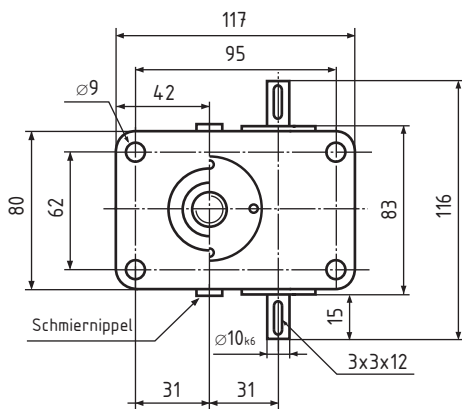
Kugelgelenkkopf GSA I K



Stehende Spindel



Rotierende Spindel



Schmiernippel

## GS I S21

Trapez-Gewindespindel Tr. 18 x 4

Hubkraft 5kN

### Übersetzung

Standard 16:1

Schnell 4:1

### Hub pro Umdrehung

Standard 0,25 mm

Schnell 1,00 mm

Max. Eintriebsdrehzahl 1500 1/min

Wirkungsgrad ca. 35 %

Gehäusewerkstoff Stahl

Gewicht ca. 1,8 kg

Ölgefüllt

**N**=Standard

**R**=Rotierende Spindel

Bestellbeispiel:

**GS**, Baugröße **I**, Variante **R**, **S21**, Hublänge **120**

Bestellnummer: **GS I R S21 120**